

Private individuals are
PROHIBITED from importing the
following into the European Union
and Latvia:

- quarantine organisms (pests and diseases and agents thereof);
- plants of fir, cedar, cypress, juniper, larch, spruce, pine, Douglas-fir, hemlock species from countries outside Europe;
- plants of chestnut and oak species with foliage from countries outside Europe;
- plants of Japanese quince, quince, hawthorn, apple, plum, pear and rose species with foliage, blossoms and fruits from countries outside Europe;
- plants of the aspen genus with foliage from North American countries;
- plants of vine, citrus, kumquat, Chinese bitter orange species from non-member countries;
- date palm plants from Algeria, Morocco;
- plants of quince, apple, plum, pear and strawberry species from countries outside Europe, except countries of the Mediterranean, Australia, New Zealand, Canada and continental states of the USA;
- potatoes for seed and food from non-member countries;
- soil and soil substrates, except pure peat;
- biological and chemical plant protection products.

It is prohibited to import the following into protective zones designated by the European Commission, including those in Latvia: plants of serviceberry, Japanese quince, hawthorn, quince, eriobotrya, apple, medlar, pyracantha, pear, cotoneaster, *Photinia davidiana* and rowan species and pollen for pollination from non-member countries except Switzerland.

* Seed Circulation Law

* Cabinet Regulations No. 218 of 30.03.2004, Regulations regarding Plant Quarantine

* Cabinet Regulations No. 463 of 29.04.2004, Regulations regarding Placing on the Market, Storage and Use of Plant Protection Products

* Cabinet Regulations No. 352 of 02.05.2006, Regulations regarding Importation of Food not Subject to Veterinary Control from the Non-member Countries and Procedures for Control at State Border Control Points, in Free Zones, Free Warehouses and Customs Warehouses

* Cabinet Regulations No. 416 of 26.06.2007, **Procedures regarding the Distribution and Quality Control of Medicinal Products**

Your queries will be answered by the experts at the Border Control Department of the Food and Veterinary Service:

In the area of border control of food and non-food products: phone: 67027426

In the area of phytosanitary border control:
. phone: 67027111, 67027381

Control Point (CP) Terehova . . phone: 65781860
CP Grebņeva phone: 65781822
CP Pāternieki phone: 65682120
CP Silene phone: 65434098
CP Rēzekne phone: 64617171
CP Daugavpils phone: 65488508
CP Port of Riga phone: 67490101
CP Riga Int'l Airport phone: 67207908
CP Latvian Post phone: 67207908
CP Port of Liepāja phone: 63488248
CP Port of Ventspils phone: 63629436

WHAT
may private
individuals
pack in their
luggage?



PĀRTIKAS UN VETERINĀRAIS DIENESTS



PĀRTIKAS UN VETERINĀRAIS DIENESTS

Peldu street 30, Riga, Latvia, LV-1050
Phone: 67095230. Fax: 67322727
E-mail: pvd@pvd.gov.lv
www.pvd.gov.lv

When entering the European Union, including Latvia, from non-member countries, private individuals may import the following for their personal consumption:

FOOD CONTAINING NO ANIMAL PRODUCTS

In personal luggage: food products for non-commercial use that do not contain products of animal origin, provided their total weight does not exceed 10 kg, and no special requirements have been established by regulatory enactments governing imports of specific product groups.

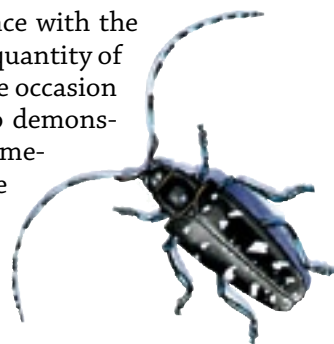
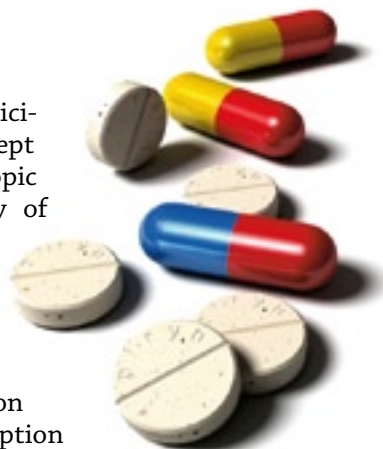
If sending by post: food products for non-commercial purposes that do not contain products of animal origin, provided their total weight does not exceed 1 kg, and no special requirements have been established by the regulatory enactments governing imports of specific product groups.



MEDICINES

In personal luggage: medicines for personal use except narcotic and psychotropic substances. The quantity of medicines imported on a single occasion may equal a 12-month supply. To demonstrate the need to use prescription medicines, the person must produce the prescription or a transcript or copy thereof, certified by the pharmacy issuing the medicines, or a document issued by another medical professional must be produced.

If sending by post: medicines for personal use except narcotic and psychotropic substances from a clearly identifiable sender who is entitled to distribute the medicines in accordance with the laws of the country of origin. The quantity of the medicines imported on a single occasion may equal a 12-month supply. To demonstrate the need to use prescription medicines, the person must produce the prescription or a transcript or copy thereof, certified by the pharmacy issuing the medicines, or a document issued by another medical professional must be produced.



Conditions for the importation of plants and plant products in personal luggage and by post.

PRIVATE INDIVIDUALS ARE PERMITTED TO IMPORT:

- Without a phytosanitary certificate: small quantities of plants plant products if they are intended for the personal, non-commercial needs of the owner, provided no phytosanitary risks exist.
- Plant seeds if they are intended for the personal, non-commercial needs of the owner, which are not subject to customs tax in accordance with customs legislation, including vegetable seeds:
 - no more than 5 kg of grain legume seeds of a single species, and
 - no more than 500 g of beet and sweet corn seeds of a single species, and
 - no more than 100 g of other vegetable seeds of a single species.
 - seeds of flower cultures without restriction.

